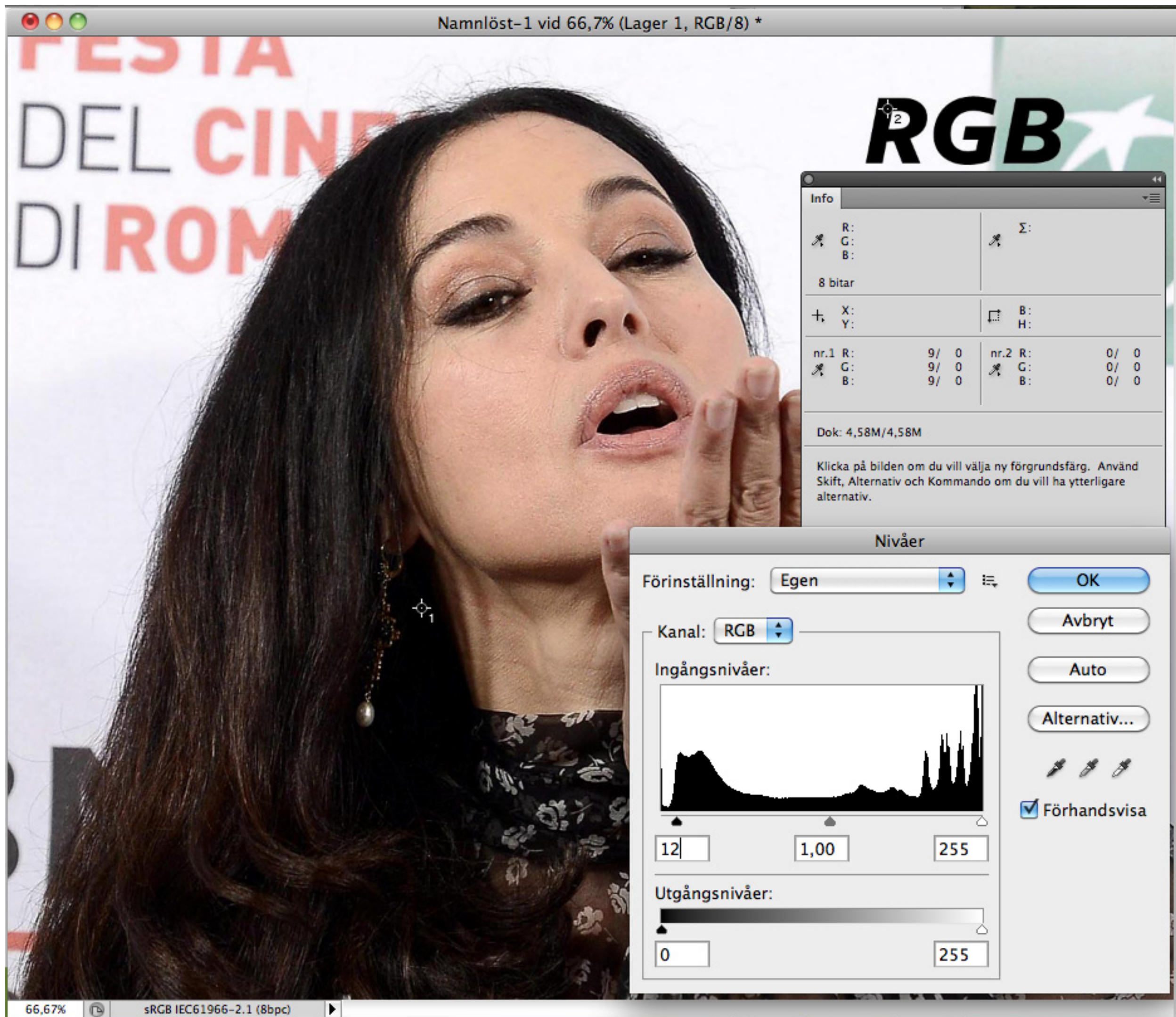
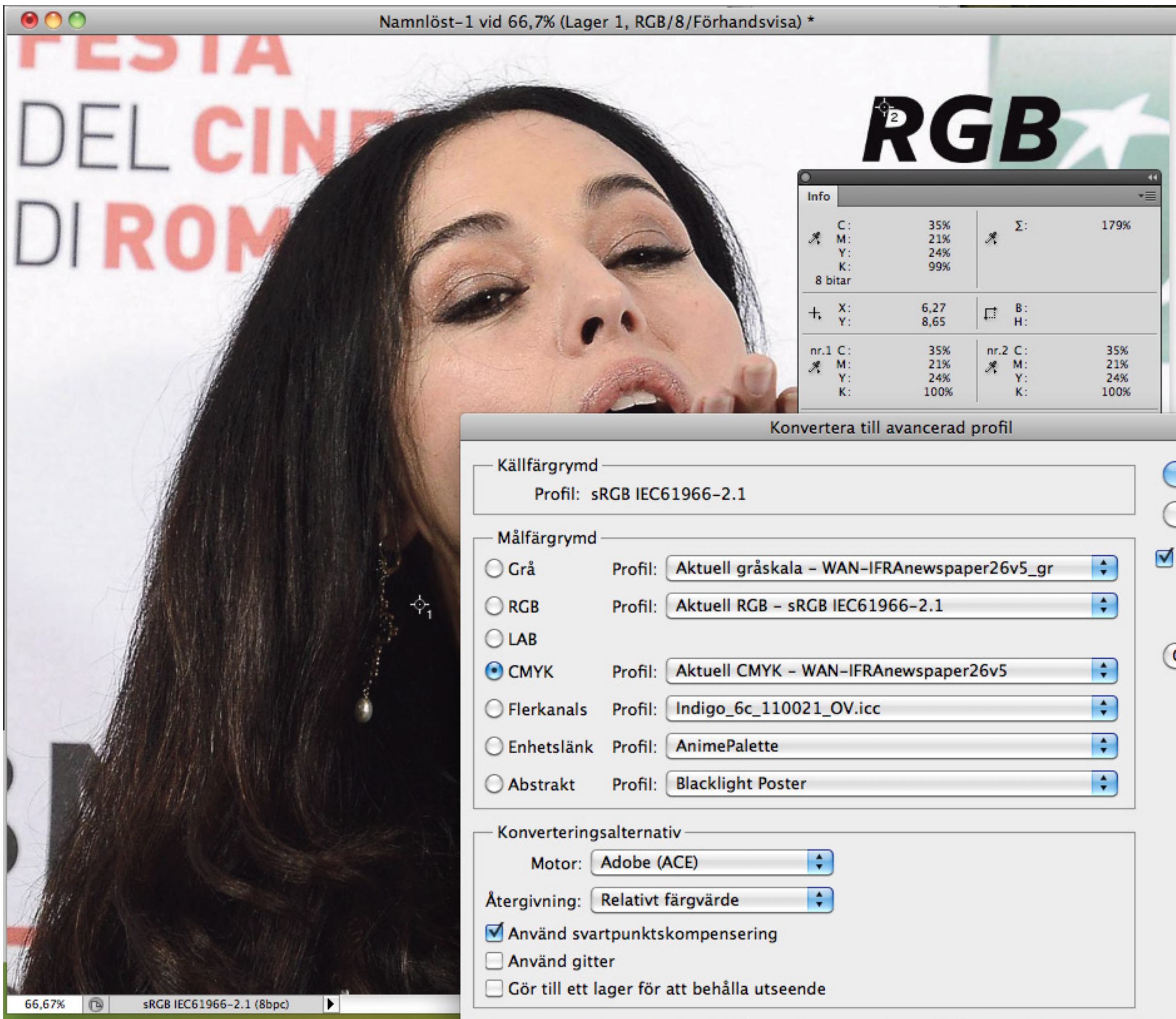


Info

R:		Σ:	
G:			
B:			
8 bitar			
X:		B:	
Y:		H:	
nr.1 R:	9	nr.2 R:	0
G:	9	G:	0
B:	9	B:	0
Dok: 4,58M/4,58M			
Klicka på bilden om du vill placera nytt färgprov. Använd Kommando om du vill ha ytterligare alternativ.			

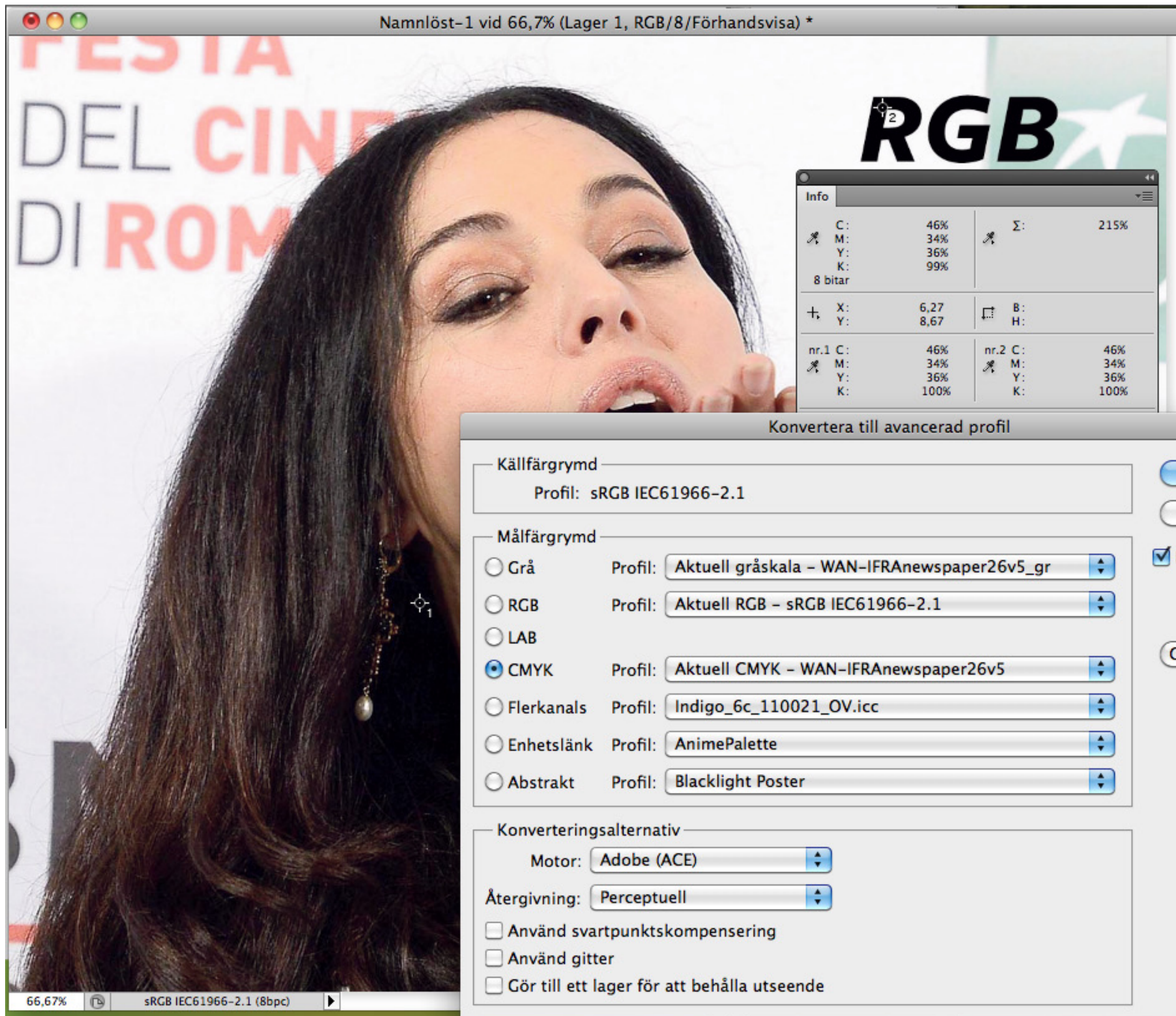






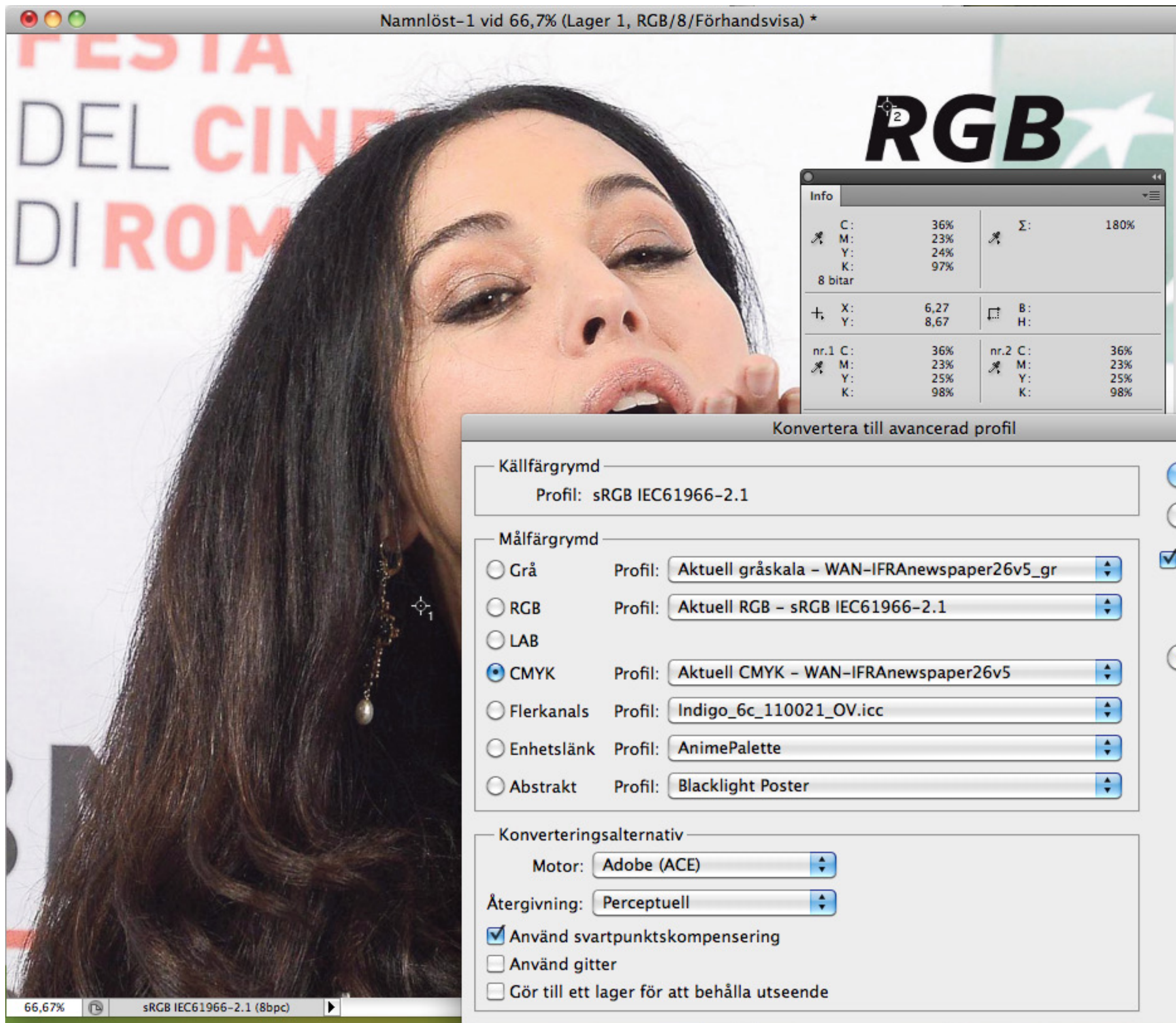
Relativ
colorimetric
with BPC
= OK

Needs to be a
good image



Perceptual
(without BPC)

= good, forgiving
separations with
more contrast.



Perceptual
Colorimetric
with BPC

= not good,
dull separations
that loses contrast
in dark areas